

# **A46 Newark Bypass**

**TR010065/APP/6.2**

## **6.2 Environmental Statement**

### **Figure 13.2 River Waterbody Catchments**

APFP Regulation 5(2)(a)

Planning Act 2008

Infrastructure Planning (Applications: Prescribed Forms and  
Procedure) Regulations 2009

Volume 6

April 2024

Infrastructure Planning

Planning Act 2008

**The Infrastructure Planning  
(Applications: Prescribed Forms  
and Procedure) Regulations 2009**

A46 Newark Bypass

Development Consent Order 202[x]

---

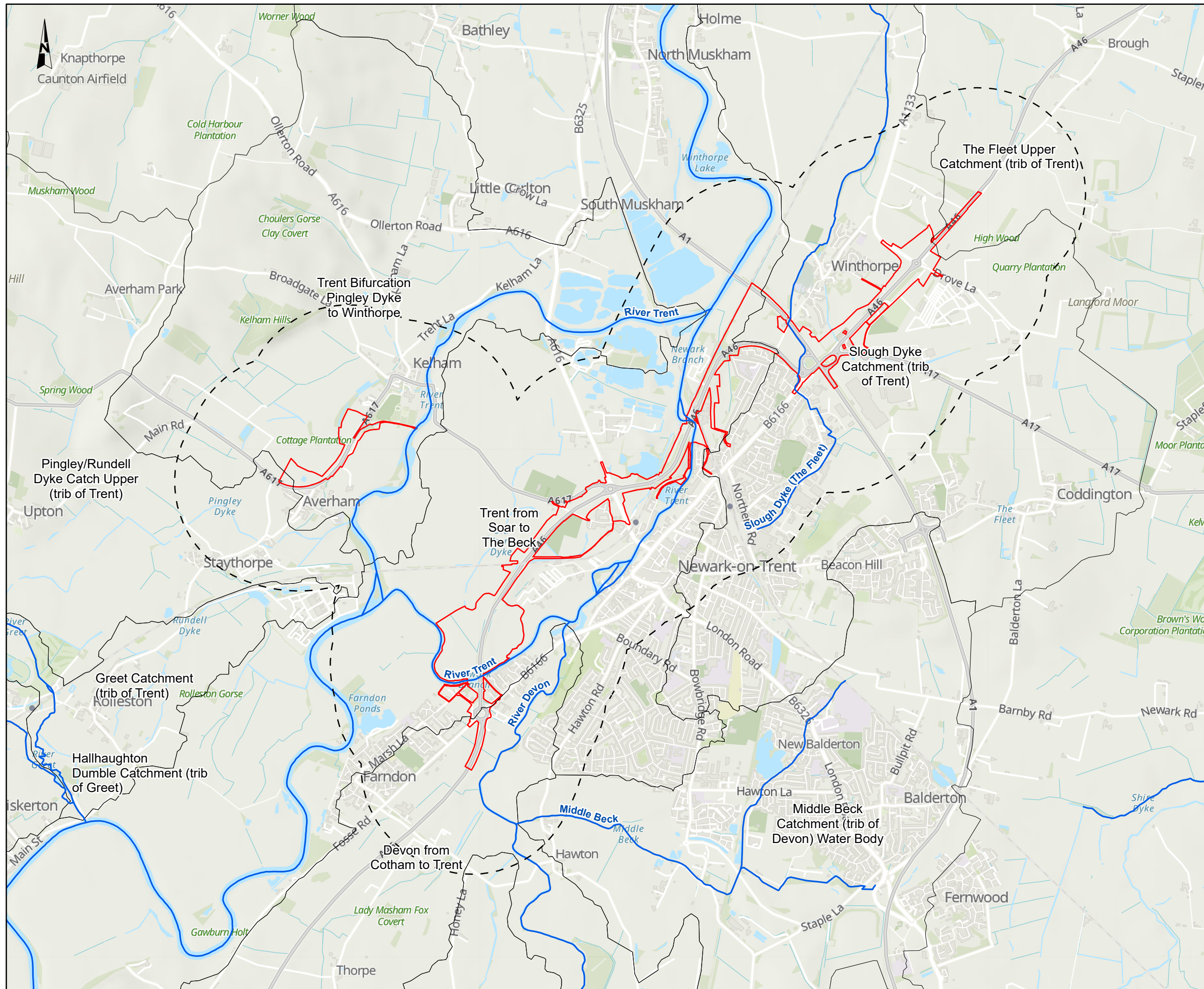
**ENVIRONMENTAL STATEMENT**

**Figure 13.2 River Waterbody Catchments**

---

<b>Regulation Number:</b>	Regulation 5(2)(a)
<b>Planning Inspectorate Scheme Reference</b>	TR010065
<b>Application Document Reference</b>	TR010065/APP/6.2
<b>Author:</b>	A46 Newark Bypass Project Team, National Highways

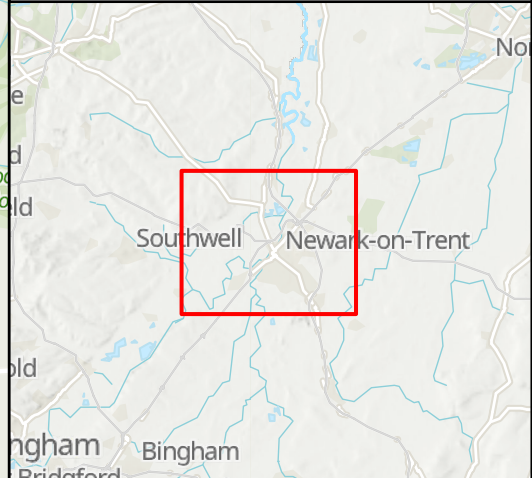
<b>Version</b>	<b>Date</b>	<b>Status of Version</b>
Rev 1	April 2024	DCO Application



**NOTES**  
 Source  
 © Environment Agency copyright and/or database right 2023. © Crown copyright and database right 2023. All rights reserved.  
 Service Layer Credits  
 Contains OS data © Crown Copyright and database right 2023  
 Contains data from OS Zoomstack

**KEY TO SYMBOLS**

- Order Limits
- Road drainage and water environment study area
- WFD river waterbody
- WFD river waterbody catchment



C01	08/12/23	DCO APPLICATION	BH	CP	HF
REV.	DATE	AMENDMENT DETAILS	ORIG	CHK'D	APP'D

CLIENT

PURPOSE OF ISSUE  
 DCO APPLICATION

DEVELOPMENT CONSENT ORDER NUMBER  
 TR010065

PROJECT TITLE  
 A46 NEWARK BYPASS

DRAWING TITLE  
 Figure 13.2  
 River Waterbody Catchments

ORIGINAL SIZE A3 SCALE 1:35,000

DRAWING NUMBER HE551478	ORIGINATOR SKAG	VOLUME EWE	PROJECT REF NO. HE551478
LOCATION CONWI_CONW	TYPE DR	ROLE LE	REVISION C01
	NUMBER 00018		

© Skanska  
 This document is issued for the party which commissioned it and for specific purposes connected with the captioned project only. It should not be relied upon by any other party or used for any other purpose.  
 We accept no responsibility for the consequences of this document being relied upon by any other party, or being used for any other purpose, or containing any error or omission which is due to an error or omission in data supplied to us by other parties.

